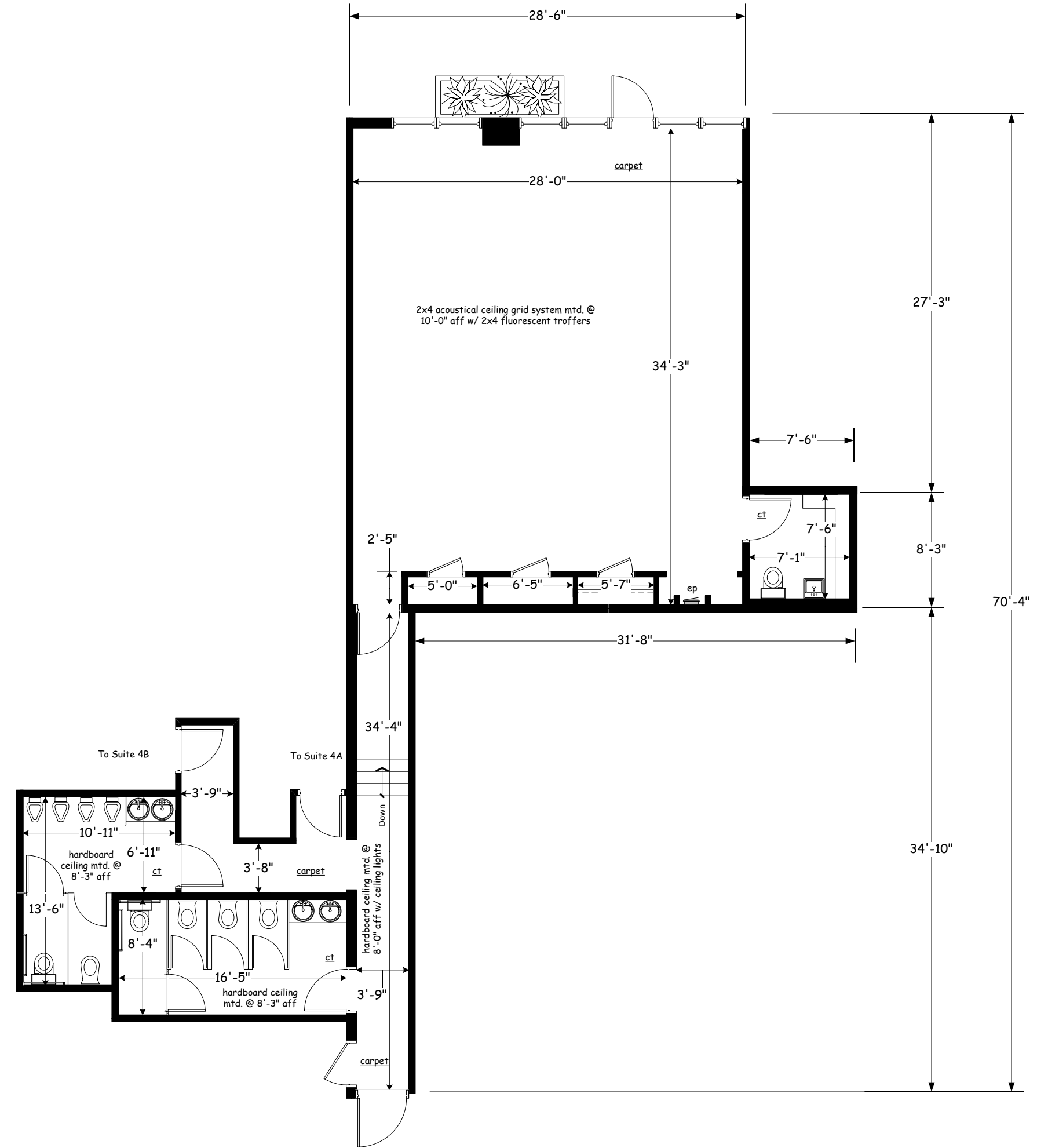
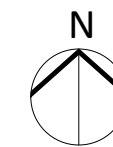


NOTE: Restrooms currently shared by Suite 3, 4A and 4B



GENERAL NOTES:

1. FIRE SPRINKLERS THROUGHOUT PREMISES.
2. COMMON AREA RESTROOMS INCLUDE HIGH BOY WATER CLOSET W/ (1) GRAB BAR, STANDARD WATER CLOSETS, URINALS AS SHOWN, COUNTER W/ SINKS, MIRROR, TP HOLDERS, RESTROOM FAN, PAPER TOWEL DISPENSER, CERAMIC TILE FLOORING AND AS WAINSCOT, HARDBOARD CEILING MTD. @ 8'-3" AFF W/ CEILING LIGHTS.
3. SUITE RESTROOM INCLUDES LOWER WATER CLOSET, LAV, MIRROR, CABINETS, RESTROOM FAN, CERAMIC TILE FLOORING, 2X4 ACOUSTICAL CEILING GRID SYSTEM MTD. @ 10'-0" AFF WITH 2X4 FLUORESCENT TROFFER.
4. ELEVATION CHANGE AT EXTERIOR PLANTER AND IN COMMON AREA CORRIDOR.



E&S Elliot & Sons	MIDTOWN COMMONS 2721 South College Avenue, Unit 3			
	FLOOR PLAN AS-BUILT approx. 1,202 sq. ft.*			
Arvada, Colorado	SIZE	DATE	DWG NO	REV
(303)425-7099	SCALE	09/10/14	A-1	
	1/8" = 1'-0"	*lease	SHEET	1 OF 1

All dimensions shown are approximate; field measured while occupied with furniture and inventory. Any exact dimension required must be field verified. Use of the referenced approximate square footage in a lease is at the sole discretion of the landlord and/or landlord's representative. Square footage should be verified by a licensed architect. If square footage is accompanied by an asterisk; square footage is from building rent roll.